

WINDOWS SERVER 2012 R2

More reasons than one to upgrade

The end of support for Windows Server 2003 isn't the only reason to upgrade. It's time to move to a product that can move at the speed of today's business.

Upgrade to Windows Server 2012 R2 and you'll benefit from increased performance and agility – along with reduced maintenance requirements.



Features			Windows Server 2003 R2	Windows Server 2008 R2	Windows Server 2012	Windows Server 2012 R2
Scalability and performance	Compute	Enterprise class scale and performance	✓	✓ ⁺	✓ ⁺	✓ ⁺
	Network	Network Interface Card (NIC) teaming	✗	✗	✓	✓
		Virtual Receive-side scaling (vRSS)	✗	✗	✗	✓
	Storage	Low-cost, highly available storage (SMBv3)	✗	✗	✓	✓ ⁺
		Virtual hard disk format (VHDX)	✗	✗	✓	✓ ⁺
Availability	Live migration		✗	✓	✓ ⁺	✓ ⁺
	Virtual machine live cloning		✗	✗	✗	✓ ⁺
Business continuity/ disaster recovery	Failure recovery through Hyper-V replica		✗	✗	✓	✓ ⁺
Simplified management	Server manager console		✗	✓	✓ ⁺	✓ ⁺
Flexible, affordable storage	Storage spaces		✗	✗	✓	✓ ⁺
	Automatic storage tiers (HDD/SSD)		✗	✗	✗	✓
Easy managed remote access	Windows Server Essentials experience		✗	✗	✓	✓ ⁺
	Virtual Desktop Infrastructure (VDI) powered by RDS		✗	✓	✓ ⁺	✓ ⁺
	Work folders		✗	✗	✗	✓

✓⁺ Indicates enhancements made to the previous versions.

Which is right for you?

LET'S TALK ABOUT YOUR BUSINESS

Which edition will you need?

Here's a quick overview of each to help you choose:

Essentials

This edition supports a maximum of 25 built-in users (no CALs) and includes a simple task interface similar to Small Business Server, making it a straightforward upgrade. However, unlike SBS it doesn't include Exchange Server, so consider adding a hosted Office 365 solution – or look at upgrading to Standard and running Exchange on a virtual server.

Standard

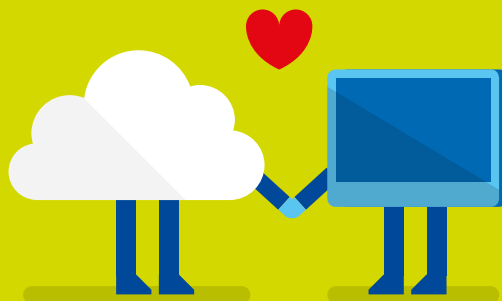
Choose Standard for unlimited users and running line of business apps such as Sage, CRM solutions etc. in a physical or low-density virtualisation environment. It also removes limits on file services, network policy and access services, and remote desktop services. Standard allows you to run two virtual instances on two processors. For more instances, choose Datacentre.

Datacentre

With unlimited virtual instances, Datacentre provides the most flexible infrastructure that customers can grow into, in the most cost-effective way. It includes Automatic Virtual Machine Activation, so you can install without having to manage product keys for each virtual machine, even in disconnected environments. Plus there's real-time reporting on usage and historical data on license states.

SPECIFICATIONS

Here's an overview of the specifications of each edition, to help you choose the one that matches your needs.



Editions	Windows Server 2012 R2 Essentials	Windows Server 2012 R2 Standard	Windows Server 2012 R2 Datacentre
Ideal for	Small business with up to 25 users	Physical or Low Density Virtualisation Environments	High Density Virtualisation and Cloud Environments
Virtualisation rights	Either in 1 VM or 1 physical server, but not both at once	2 VMs	Unlimited
User Limit	25	Unlimited	Unlimited
Licensing Model	Per Server	Per CPU pair + CAL/DAL	Per CPU pair + CAL/DAL
Processor Chip Limit	2	64	64
Memory Limit	64GB	4TB	4TB
Essentials Experience Role	Yes	Yes	Yes
Hyper-V	No	Yes	Yes
Automatic VM Activation	No	Yes	Yes
File Services limits	1 standalone DFS root	Unlimited	Unlimited
Network Policy & Access Services limits	250 RRAS connections, 50 IAS connections, and 2 IAS Server Groups	Unlimited	Unlimited
Remote Desktop Services limits	Gateway only	Unlimited	Unlimited
DHCP, DNS, Fax server, Printing, IIS Services	Yes	Yes	Yes
Windows Server Update Services	Yes	Yes	Yes
Active Directory Services	Yes, must be root of forest and domain	Yes	Yes
Active Directory Certificate Services	Certificate Authorities only	Yes	Yes
Windows Powershell	Yes	Yes	Yes
Server Core mode	No	Yes	Yes

So you know which Edition, now choose the right licence model for you.

Use the table below to help determine the best way to licence the software.

Sales qualifiers	COEM	ROK	Volume licensing
Price	Cost effective	Cost effective	5-15% more
Transferable across hardware	No	No	Yes
Free support from OEM	No	Yes	No
Customer buying new server hardware	N/A	Cost effective	N/A
Customer already uses volume licensing model	N/A	N/A	Cost effective
Software Assurance available	Yes, within 60 days of purchase. Licence is transferable.	Yes, within 60 days of purchase. Licence is transferable.	Yes, when licence purchased.

Plan ahead – the future is closer than you think

It might be tempting to dip your toe and just get Essentials over Standard.

Ask yourself these three important questions:

1. Are you looking to grow to over 25 users in the near future?
2. Do you want to run Line-of-Business apps?
3. Do you want to virtualise?

If you answered yes to any of these, then Standard edition is the better choice.

See it for yourself:

Download the Windows Server 2012 R2

Product Trial Evaluation Tool – http://aka.ms/WS2012R2_Eval