

SSD-RAIL

2.5-Inch
SSD/HDD
Conversion Bay

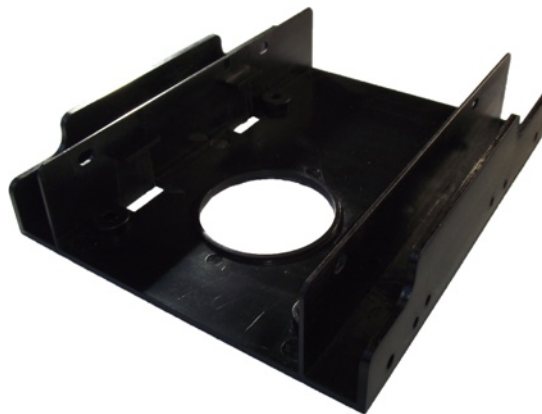


Image for illustrative purposes only.
Subject to change.



Desktop
PCs



Business
Servers



Performance
Workstations



Development
Systems

Easy-To-Fit SSD/HDD Conversion Bay for Legacy PCs

Looking to install your next generation Solid State Disk (SSD) in your 3.5-inch bay PC or Server?

The new **SSD-RAIL** from Dynamode is a cost effective and simple to install, all-in-one solution for 2.5 inch storage deployment such as installing 2.5-inch SSD, Hard Disk (HDD) or almost any other device using the standard 2.5-inch form factor.

Just position into any 3.5-inch drive bay in your PC, Server or Workstation with your next generation 2.5-inch media secured, courtesy of the varied positioning fixings within the SSD-RAIL, its that simple.

Manufactured from robust ABS plastic, of course totally non-metallic so there is no chance of an electrical short circuit. Moreover, integral venting apertures allow good air-flow around the installed drives to maintain maximum life expectancy from your storage investment.

So, now you have the easy option of upgrading your existing computer hardware at a cost that's just too low to print!

specifications:

Ideal for adding 2.5-inch SSD/HDD in a 3.5 inch only bay

Multi-slot design ensures a perfect fit for your drive

Lightweight ABS plastic with venting apertures

Give expansion potential to your PCs or Servers

Supplied with fixing screws (x4)

Exciting retail packaging



Copyright 2015 Dynamode
All trademarks acknowledged E&OE.
Details subject to change